

Toilet Cubicle Technical Information



halumm (China) Limited

CASINO (toilet cubicles)

Technical Specification

Features

The main material is 6063-T5 aluminum alloy, no visible screw; the entire is simplicity and easy to clean.

Door panel and pillar connect together; the whole panel is not easy to warp

Self-closing hinge is hidden in pillar, appearance is simplicity.

Size

Partition height: 2000mm (including support leg)

When panel is wood panel: support leg height: 100mm 150mm: when panel is glass, support leg : 100MM. The depth of toilet cubicle: according to the site size

Recommending door width: 596mm, 700mm (according to customer's requirement)

Surface plate

Panel

12mm HPL panel (recommend)

18mm MDF panel with double laminate

Honeycomb Panel

Glass

5+5mm laminate glass

Hardware Accessory

Fastener: make zinc plating, spraying, antirust treatment separately according to material itself.

Induction lock: Our Company has its brand and types

Character

Good construction design makes Casino toilet partition more stable

Adopt high quality HPL panel, prevent fire and water.

Profile adopts 6063-T5 alloy aluminum, which has a good performance on hardness and corrosion resistance

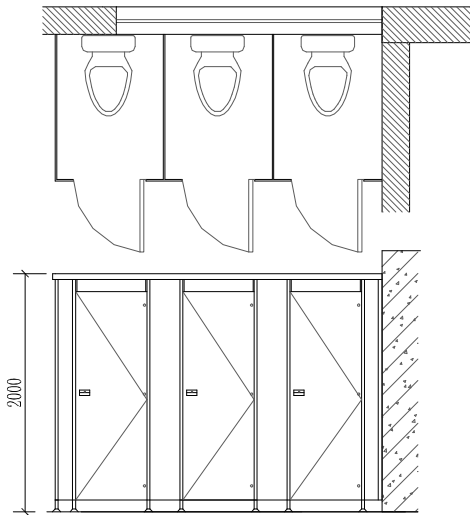
Quality

The design, manufacturing, producing and sale all pass certificate of Quality Management system ISO 9001:2008 and Environment Management System ISO14001:2004, we guarantee product's quality.

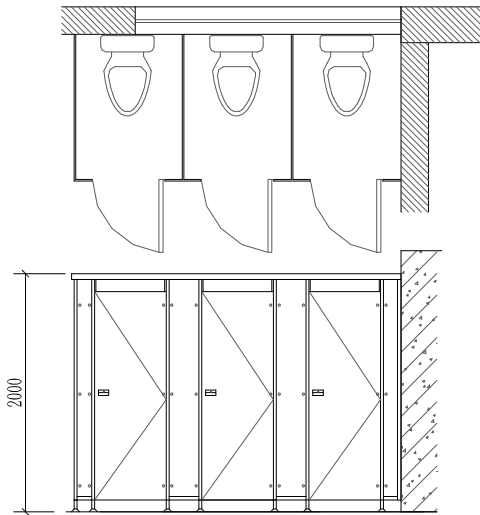


CASINO (toilet cubicles)

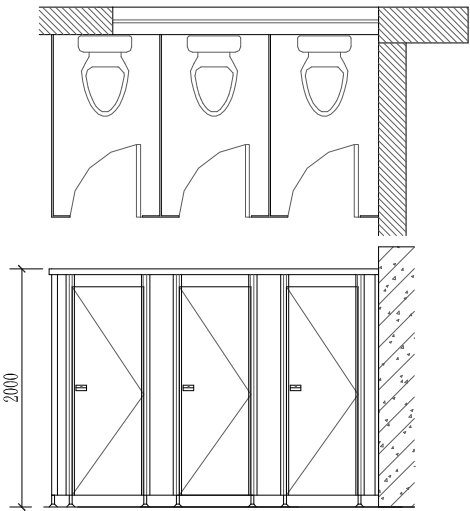
Elevation drawing



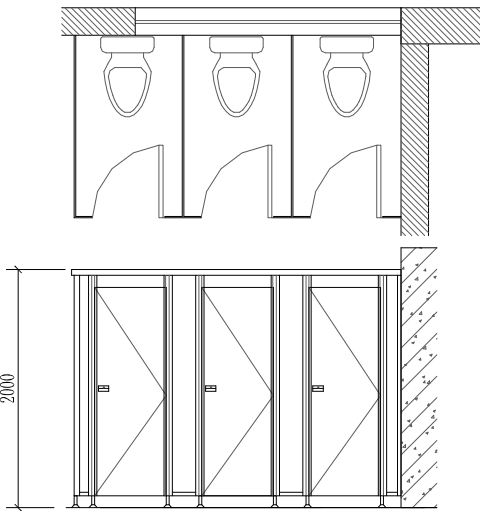
(a) open from outside



(b) open from outside



(c) open from inside

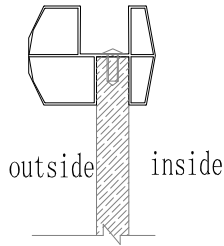


(d) open from inside

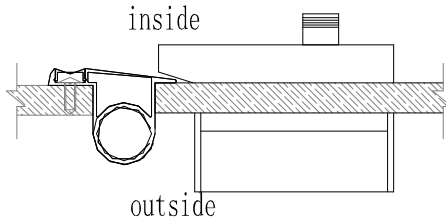


CASINO (Toilet cubicles)

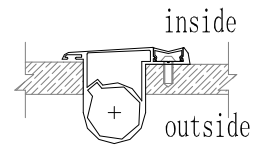
Joint Section Photo



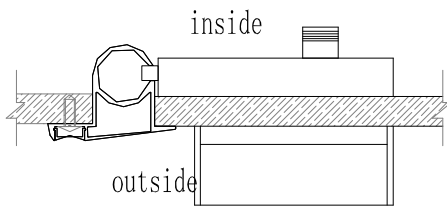
Casino head rail



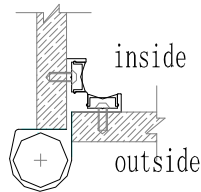
Casino indication lock



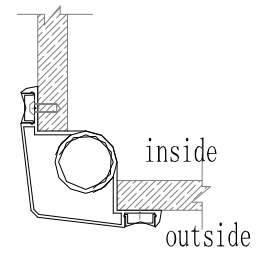
Casino main pillar



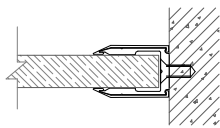
Casino outside open indication lock, front main pillar



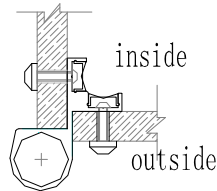
Casino outside turn corner profile



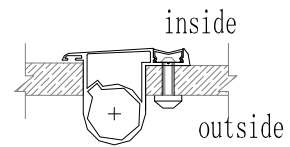
Casino inside turn corner profile



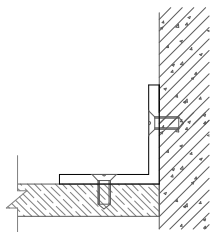
Casino Panel & U type profile



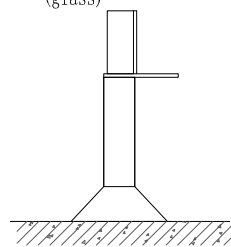
Casino outside turn corner profile



Casino main pillar (glass)



Casino bracket



Casino support leg



halum (China) Limited

JIENO (toilet cubicles) Technical Indicators

Technical specification

Features

Aluminum base set, the entity is simplicity and easy to clean.
No pillar, the appearance looks simpler.

Door opening outside and inside are both available, adopt self-closing hinge which provide more convenience to customer.

Size

Recommending partition height: 2000 (include aluminum base set)
Aluminum base set height: 80mm
The depth of toilet cubicle: according to the site size
Recommending Door width: 596mm, 700mm (according to customer's requirement)

Surface plate

Panel: 12mm 15mm HPL panel

Hardware Accessory

Fastener: make zinc planting, spraying, and antirust and oxidation treatment separately according to material itself.
Induction lock: Our Company has its brand and types

Character

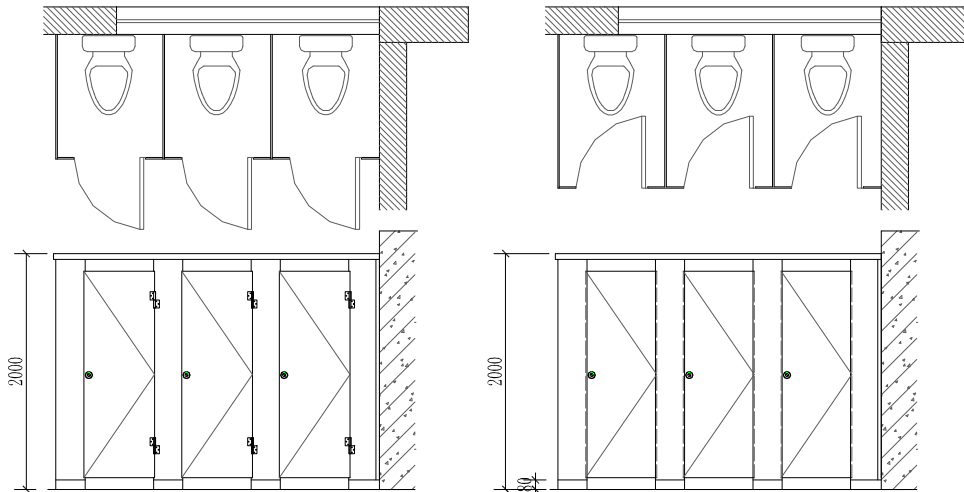
Adopt good quality HPL panel, water proof and fire rated.
Profile adopts 6063-T5 aluminum alloy, which has a good performance on hardness and corrosion resistance

Quality

The design, manufacturing, producing and sale all pass certificate of Quality Management system ISO 9001:2008 and Environment Management System ISO 14001:2004, we guarantee product's quality.

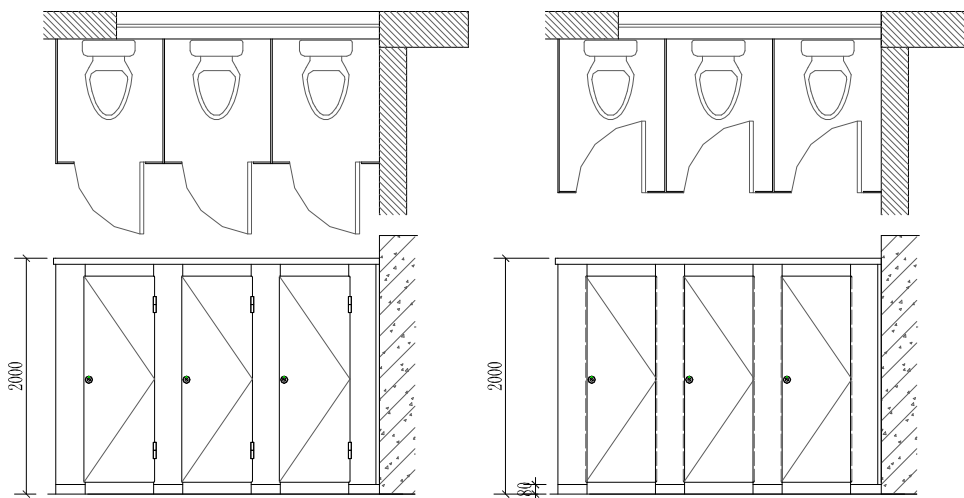


Elevation drawing-1



(a) panel open outside

(b) panel open inside

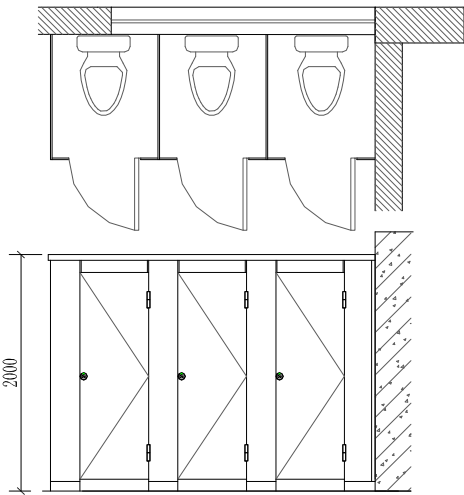


(c) panel outside open

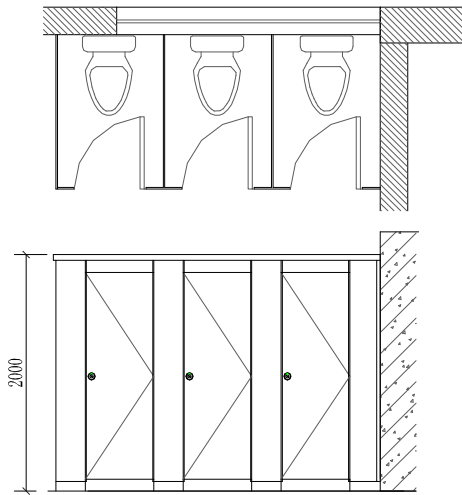
(d) panel inside open



Elevation drawing-2

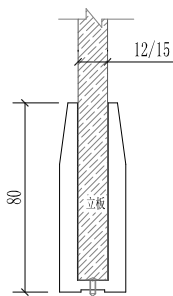


(e) panel outside open
(doorstop bar)

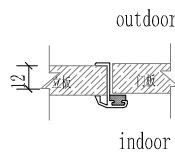


(f) door open by flush

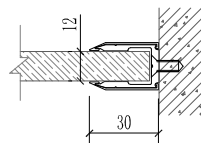
Jieno profile section photo



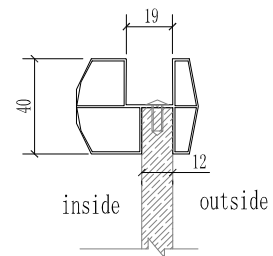
Jieno panel & ground joint



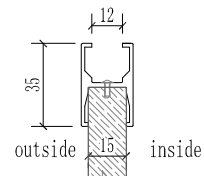
Jieno door stop bar



Jieno panel & ground



Jieno head rail

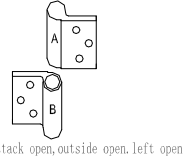


Jieno head rail



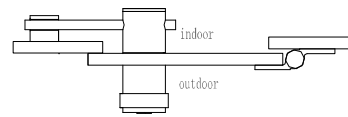
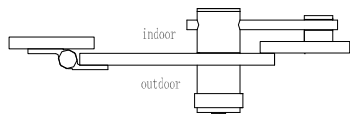
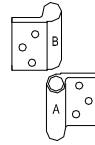
door open direction&type-1

code	English name
DW-1	stack open, outside open, left open

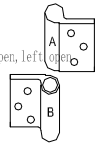


code	English name
DW-2	stack open, outside open, right open

stack open, outside open, right open

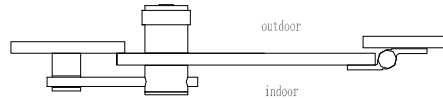
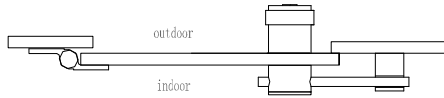
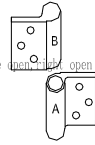


code	English name
DN-1	stack open, inside open, left open

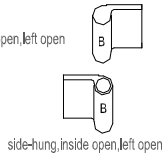


code	English name
DN-2	stack open, inside open, right open

stack open, inside open, right open

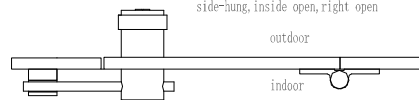
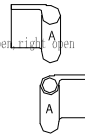


code	English name
PN-1	side-hung, inside open, left open

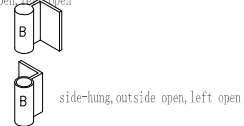


code	English name
PN-2	side-hung, inside open, right open

side-hung, inside open, right open

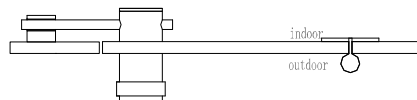
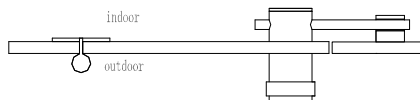
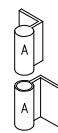


code	English name
PW-1	side-hung, outside open, left open



code	English name
PW-2	side-hung, outside open, right open

side-hung, outside open, right open





Technical Specification

character

Aluminum leg, neat in the whole, easy to clean.

no pillar, more tidy in the shape.

outside & inside open can come ture, adopting automatic hinge to support more convenience for customer.

Size :

Partition height recomending: 2000mm(including base set)

base set height: 130mm 150mm.

toilet depth: according to the real size.

door panel width recommending: 600mm, 700mm (also can make according to customer request)

Panel

12mm、18mm HPL panel

18mm MDF + Laminate panel

18mm comb alu panel

Hardware accessories

fastener: according to the relative material, it is disposed by zinc plating, painting, rust-proof, oxidation.

Indicattion lock: own brand&type

Character

adpoting best HPL, water & fire protection

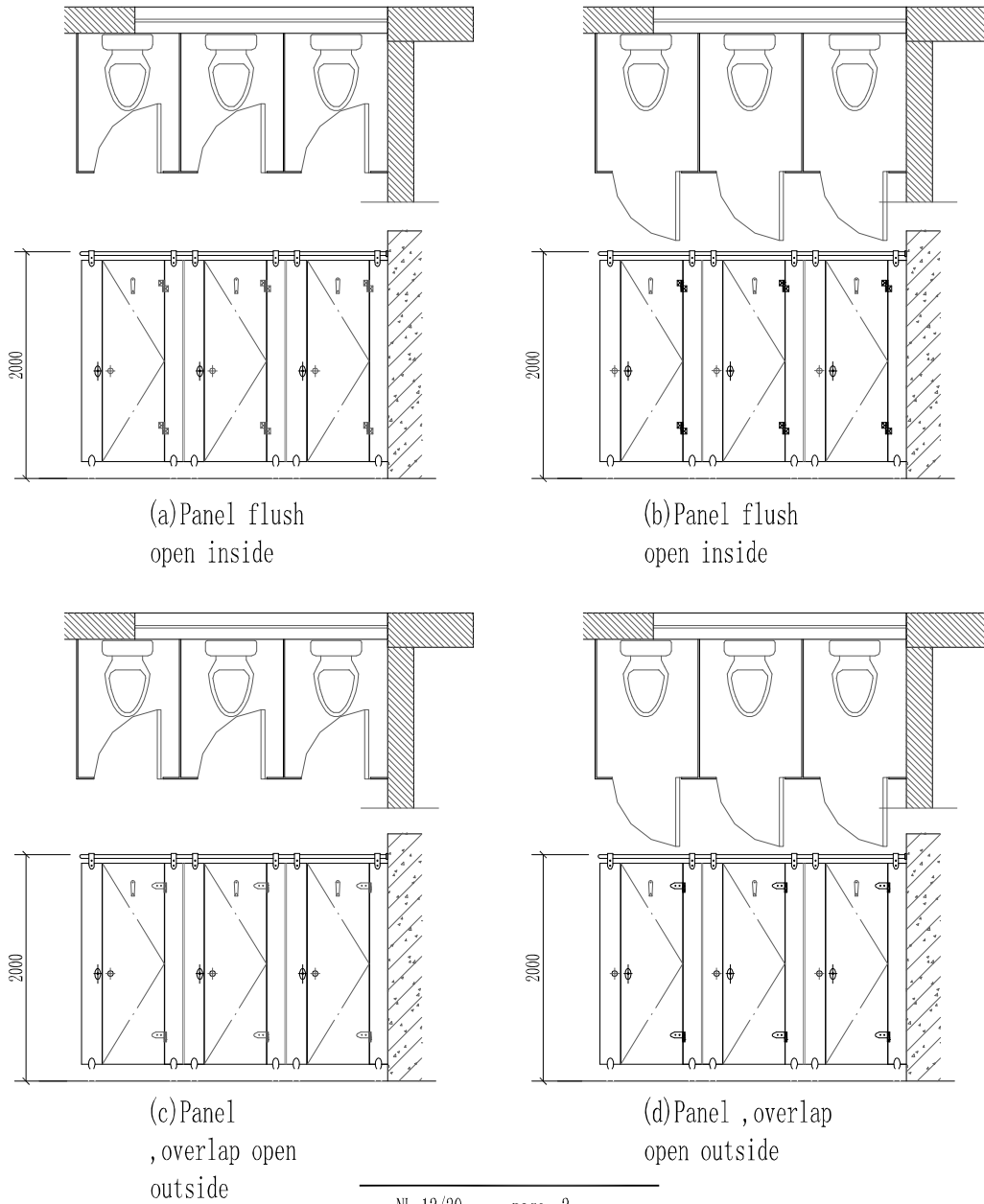
prfile adopting 6063-T5 aluminum alloy, having good hardness&corrosion protection.

Quality

halumm design、production、manufacture&sale all passed ISO9001:2008 Quality Managemanet System&
ISO14001:2004 Enviroment Management, quality guaranteed by them.



Elevation drawing

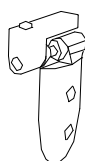




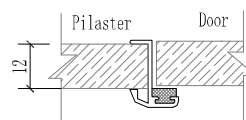
Section Photo



(a) panel hanging clamp



(b) panel overlap hinge



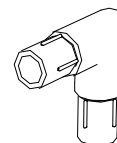
(c) flush open door stopper hinge



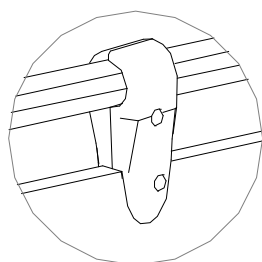
(d) induction locker



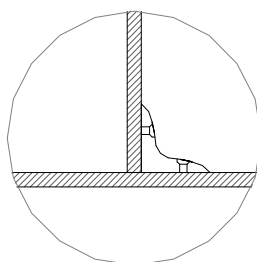
(e) corner



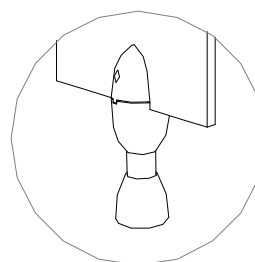
(f) headrail connecting corner



(g) head rail connecting point



(h) bracket connecting point



(j) support leg installing point